

In silico identification, characterization expression profile of WUSCHEL-Related Homeobox (WOX) gene family in two species of kiwifruit

Chen Feng¹, Shuaiyu Zou¹, Puxin Gao¹ and Zupeng Wang^{2,3,4}

¹ Lushan Botanical Garden, Chinese Academy of Sciences, Jiujiang, China

² Innovative Academy of Seed Design, Chinese Academy of Sciences, Beijing, China

³ Engineering Laboratory for Kiwifruit Industrial Technology, Chinese Academy of Sciences, Wuhan, China

⁴ Key Laboratory of Plant Germplasm Enhancement and Specialty Agriculture, Wuhan Botanical Garden, Chinese Academy of Sciences, Wuhan, China

ABSTRACT

The WUSCHEL (WUS)-related homeobox (WOX) gene family is a class of plant-specific transcriptional factors and plays a crucial role in forming the shoot apical meristem and embryonic development, stem cell maintenance, and various other developmental processes. However, systematic identification and characterization of the kiwifruit WOX gene family have not been studied. This study identified 17 and 10 WOX genes in *A. chinensis* (Ac) and *A. eriantha* (Ae) genomes, respectively. Phylogenetic analysis classified kiwifruit WOX genes from two species into three clades. Analysis of phylogenetics, synteny patterns, and selection pressure inferred that WOX gene families in Ac and Ae had undergone different evolutionary patterns after whole-genome duplication (WGD) events, causing differences in WOX gene number and distribution. Ten conserved motifs were identified in the kiwifruit WOX genes, and motif architectures of WOXs belonging to different clades highly diverged. The *cis*-element analysis and expression profiles investigation indicated the functional differentiation of WOX genes and identified the potential WOXs in response to stresses. Our results provided insight into general characters, evolutionary patterns, and functional diversity of kiwifruit WOXs.

Submitted 14 August 2021
Accepted 29 September 2021
Published 28 October 2021

Corresponding author

Zupeng Wang,
wangzupeng@wbcas.cn

Academic editor

Wei Ma

Additional Information and
Declarations can be found on
page 18

DOI 10.7717/peerj.12348

© Copyright
2021 Feng et al.

Distributed under
Creative Commons CC-BY 4.0

OPEN ACCESS

Subjects Bioinformatics, Genetics, Genomics, Plant Science

Keywords *Actinidia chinensis*, *A. eriantha*, Whole-genome duplication, Expression profiles, Conserved motif

INTRODUCTION

Homeobox (HB) proteins were primarily identified in *Drosophila*, and they belong to a large transcriptional factor (TF) family harboring a short stretch of amino acids (60–66 residues) conserved DNA-binding domain (referred to as homeodomain) (*Mukherjee, Brocchieri & Bürglin, 2009; Holland, 2013; Alvarez et al., 2018*). HB proteins could be found in all eukaryotic species tested (*Liu et al., 2014b*). The homeodomain (HD)-containing transcriptional factor family has been identified in both monocots and dicots (*Ariel et al., 2007; Liu et al., 2014b*). The HB superfamily can be classified into six

subfamilies, including homeodomain-leucine (HD-Zip), plant homeodomain (PHD)-finger, BELL, zinc finger-homeodomain (ZF-HD), WUSCHEL (WUS)-related homeobox (WOX), and KNOTTED1-like-homeobox (KNOX) (Ariel *et al.*, 2007; Mukherjee, Brocchieri & Bürglin, 2009; Liu *et al.*, 2014b). Previous researches have verified that members of the WOX subfamily participate in many plant biological processes, such as the formation and maintenance of the shoot apical meristem (SAM) (Meng *et al.*, 2019). The WOX subfamily specifically binds to the target region by the homeodomain to activate or depress the expression of the target gene in plants (Mukherjee, Brocchieri & Bürglin, 2009; Jha, Ochatt & Kumar, 2020; Tvorogova *et al.*, 2021). Genome-wide identification of the WOX subfamily has been performed in several plants, including Arabidopsis, rice, maize, walnut, physic nut, grapes, peach, pear, apricot, coffee, and poplar (Li *et al.*, 2020; Shafique Khan *et al.*, 2021).

The WOX gene family has often been classified into three clades which include the ancient clade, the intermediate clade, and the modern/WUS clade (Tvorogova *et al.*, 2021). Among the 15 WOX genes in Arabidopsis, *AtWOX10*, *AtWOX13*, and *AtWOX14* belong to the ancient clade (Tvorogova *et al.*, 2021). The *AtWOX10* gene is a presumptive pseudogene owing to its undetectable gene expression in Arabidopsis plants (Deveaux *et al.*, 2008). While *AtWOX13* and *AtWOX14* play central roles in regulating the development of flowers, fruits, and conductive tissues (Deveaux *et al.*, 2008; Costanzo, Trehin & Vandenbussche, 2014; Jha, Ochatt & Kumar, 2020). However, WOX genes in the ancient clade expressed differently in different species, indicating the species-specific function of ancient clade WOX genes (Alvarez *et al.*, 2018). The *AtWOX13* gene regulates fruit development, the number of lateral roots, and flower time (Deveaux *et al.*, 2008; Romera-Branchat *et al.*, 2013). The *AtWOX14* usually affects plant growth and the formation of conductive tissues, and the deletion of *AtWOX14* induces plant dwarfism (Denis *et al.*, 2017). The WOX genes of the ancient clade in other species functioned similarly to that in Arabidopsis (Tvorogova *et al.*, 2021). The intermediate clade contains four *AtWOX* genes (*AtWOX8*, *AtWOX9*, *AtWOX11*, and *AtWOX12*) (Deveaux *et al.*, 2008; Tvorogova *et al.*, 2021). The *AtWOX8* and *AtWOX9* co-regulate the development of the apical-basal polarity axis (Wu, Chory & Weigel, 2007; Lie, Kelsom & Wu, 2012). However, the orthologs of *AtWOX9* in other species are verified participating in the inflorescence development (Tvorogova *et al.*, 2021). The *AtWOX11* and *AtWOX12* have similar functions in regulating the callus formation and development of adventitious roots (Liu *et al.*, 2014a). The modern/WUS clade is the largest clade which includes eight WOX genes (*AtWUS* and *AtWOX1-7*) in Arabidopsis (Deveaux *et al.*, 2008). Besides the homeodomain, WOX genes in the modern/WUS clade also have other conserved domains, such as the WUS motif or EAR domain (ERF-associated amphiphilic repression) (Deveaux *et al.*, 2008; Wu, Li & Kramer, 2019). WOX genes in the modern/WUS clade participate in the regulating developments of various types of meristems (Tvorogova *et al.*, 2021). In summary, the WOX family plays a central role in maintaining different types of meristems, regulating the formation of plant organs, and controlling cell proliferation and differentiation (Tvorogova *et al.*, 2021).

Kiwifruit becomes a popular fruit worldwide owing to its high vitamin C content and abundant minerals (Cheng et al., 2004; Stonehouse et al., 2013). Kiwifruit belongs to the *Actinidia* genus, including 54 species and 75 taxa (Tang et al., 2019). The whole genome of the *A. chinensis* (Ac) and *A. eriantha* (Ae) has been reported (Pilkington et al., 2018; Tang et al., 2019). These two species are different in many vital traits, especially flowering time (Pilkington et al., 2018; Tang et al., 2019). The *WOX* gene family is verified to affect plant flowering and development (Tvorogova et al., 2021), whereas systematic investigations and functional analyses of the *WOX* gene family have not been reported in kiwifruit.

In the present study, we comprehensively identified the *WOX* gene family from *A. chinensis* and *A. eriantha* genome. We firstly reported the gene structure, motif compositions, chromosomal distributions of the *WOX* gene family for these two kiwifruit species. Further, we analyzed and compared the phylogenetic relationships and evolution patterns of the *WOX* gene family for the two kiwifruit species. *Cis*-elements analysis and expression patterns in different tissues and under different stress conditions were performed. Our results provided critical information on the structure characters, evolution patterns, and potential function of the *WOX* genes in the two kiwifruit species.

MATERIALS & METHODS

Gene identification and analysis

The whole-genome sequences and protein sequences of the two kiwifruit species (*A. chinensis* and *A. eriantha*) were obtained from the Kiwifruit Genome Database (<http://kiwifruitgenome.org/>). The *WOX* protein sequences of *Arabidopsis* and rice were collected from the PlantTFDB v4.0 (<http://planttfdb.gao-lab.org/>). The local BLAST tool was used to construct the protein database of the two kiwifruit species. The combined protein sequences of *Arabidopsis* and rice *WOX* protein were used to query the kiwifruit protein database by the BLASTp. The candidate *WOX* proteins in kiwifruit were identified by BLASTp search scores of ≥ 100 and an e-value of $\leq 1 \times e^{-10}$. The Conserved Domain Database (CDD) (<https://www.ncbi.nlm.nih.gov/Structure/cdd/cdd.shtml>) and the simple modular architecture research tool (SMART) (<http://smart.embl.de/>) were used to confirm the homeodomain of the candidate *WOX* protein, and the candidate *WOX* protein harboring the homeodomain were obtained and used for further analysis.

Analysis of kiwifruit *WOX* protein structure

The protein length, theoretical isoelectric point (pI), grand average of hydropathicity (GRAVY), and molecular weight (MW) of the *WOX* gene family in the two kiwifruit species were computed using the ProtParam on ExPASy server (<http://web.expasy.org/protparam/>). The subcellular localization of kiwifruit *WOX* proteins was predicted using the online web software CELLO (v2.5, <http://cello.life.nctu.edu.tw/>).

Gene structure, motif features, and cis-elements analysis

The genome sequences and coding sequences of the *WOX* genes of the two kiwifruit species were extracted. The gene structures of *WOX* genes were investigated using the Gene Structure Display Server (GSDS 2.0, <http://gsds.cbi.pku.edu.cn/>). The conserved motifs of *WOX* proteins were identified using MEME (<http://meme-suite.org/tools/meme>) with a maximum of 10 motifs (Bailey *et al.*, 2009). To analyze *cis*-elements involved in regulating *WOX* genes, we extracted the 1,500-bp upstream promoter regions of each *WOX* gene, and predicted *cis*-elements with the PlantCARE database (<http://bioinformatics.psb.ugent.be/webtools/plantcare/html/>) (Lescot *et al.*, 2002).

Phylogenetic analysis of *WOX* proteins

The multiple sequence alignments of *WOX* proteins from *Arabidopsis thaliana*, *Oryza sativa*, *A. chinensis*, and *A. eriantha* were performed using ClustalX with default parameters (Larkin *et al.*, 2007). The phylogenetic tree was constructed by MEGA X software using the neighbor-joining (NJ) method with 1,000 bootstrap replicates (Kumar *et al.*, 2018).

Gene duplication and synteny analysis

The genome location of *WOX* genes was extracted from the corresponding GFF file using an in-house Perl script, and the chromosomal distributions were rendered using MapGene2 Chrome (http://mg2c.iask.in/mg2c_v2.0/). The duplication patterns of kiwifruit *WOX*s were identified using the MCScanX software with default parameters (Wang *et al.*, 2012). The synonymous (*K_s*) and nonsynonymous (*K_a*) mutation rates of the duplicated *WOX* gene pairs were calculated using TBtools software (Chen *et al.*, 2020). The syntenic analysis of kiwifruit *WOX*s was conducted using the MCScanX software with default parameters to produce the collinearity blocks across the whole genome (Wang *et al.*, 2012). The collinearity gene pairs of kiwifruit *WOX*s were visualized using TBtools (Chen *et al.*, 2020).

Expression analysis of kiwifruit *WOX*s

To investigate the expression patterns of kiwifruit *WOX*s in different tissues, developmental stages, or under stress treatments, we collected nine published RNA-seq data including those from leaves, roots, stems, different fruit developmental stages, fruits treated with or without ethylene, leaves infected with pathogens (PRJNA514180, PRJNA187369, PRJNA277383, PRJNA328414, PRJNA436459, PRJDB5543, and PRJNA535344) from NCBI (<https://www.ncbi.nlm.nih.gov/>). We further re-analyzed these transcriptome data using genomes of the *Actinidia chinensis* 'Red5' cultivar and *A. eriantha* white cultivar as reference genome (Pilkington *et al.*, 2018; Tang *et al.*, 2019). The reads alignment was performed using the HISAT2 v2.0.1 (Kim *et al.*, 2019), and the transcripts were assembled and quantified using the STRINGTIE v2.1.5 (Pertea *et al.*, 2015).

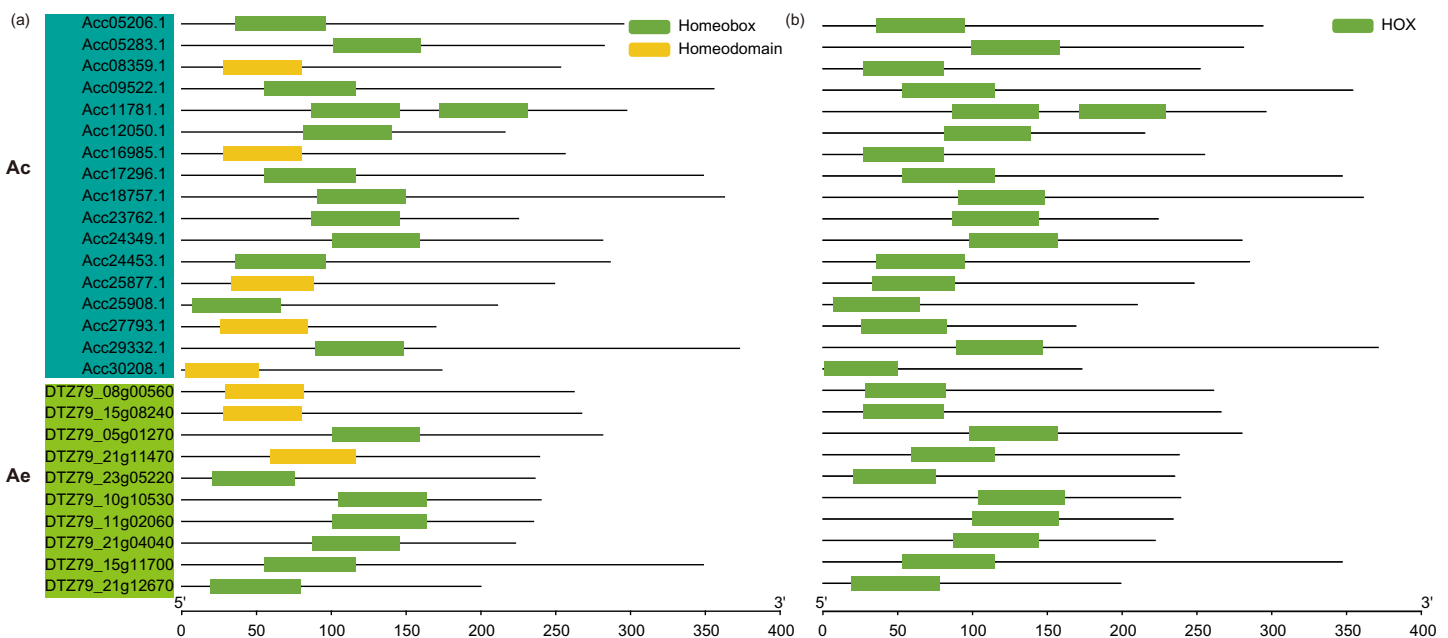


Figure 1 Conserved domain of WOX. Conserved domain of kiwifruit WOX gene predicted by Pfam (A) and SMART (B). *Ac*, *A. chinensis*; *Ae*, *A. eriantha*. Full-size DOI: [10.7717/peerj.12348/fig-1](https://doi.org/10.7717/peerj.12348/fig-1)

RESULTS

Genome-wide identification and classification of kiwifruit WOXs

To identify potential WOX family members in kiwifruits, WOX protein sequences from Arabidopsis were used as queries in BLASTp homology search against *Ac* and *Ae* genomes. Totally, we identified 17 and 10 putative WOXs from *Ac* and *Ae* genomes, respectively (Fig. 1 and Table S1). The homeodomain (PF00046 and SM00389) was verified by using Pfam and SMART databases (Fig. 1). The amino acid length of both *Ac*WOXs and *Ae*WOXs proteins varied greatly from 199 a.a (*Ac*WOX11a) to 354 a.a (*Ac*WOX3a) and from 169 a.a (*Ae*WOX4c) to 371 a.a (*Ae*WOX10) (Table 1; Table S1). The predicted molecular weight of *Ac*WOX and *Ae*WOX proteins ranged from 22.3 to 39.2 kDa and from 19.4 to 42.2 kDa (Table 1). Moreover, the theoretical isoelectric point (pI) ranged from 5.30 to 9.75 for *Ac*WOXs and from 5.66 to 9.76 for *Ae*WOXs (Table 1).

The subcellular localization of kiwifruit WOX proteins was predicted, and all of *Ac*WOX and *Ae*WOX proteins were localized in the nuclear (Table 1).

Phylogenetic and molecular evolution analysis of kiwifruit WOXs

To explore the phylogenetic relationship and evolutionary pattern of WOX genes in kiwifruit, the neighbor-joining (NJ) tree was constructed using the full-length protein sequences of the identified 17 *Ac*WOXs, 10 *Ae*WOXs, and previously published 15 *At*WOXs and 10 *Os*WOXs (WOX genes from Arabidopsis and rice). Consistent with previous reports in Arabidopsis, rice, and other species (Nardmann & Werr, 2012; Lin et al., 2013; Tang et al., 2017; Shafique Khan et al., 2021), both *Ac*WOXs and *Ae*WOXs were classified into three clades (the ancient clade, the intermediate clade, and the modern/WUS

Table 1 Characteristics of WOX proteins.

Species	Genes	Genome ID	Protein Length (aa)	MW (Da)	pI	GRAVY	Predicted Localiaztion	
<i>A. chinensis</i>	AcWUS1a	Acc05206.1	239	27,182.38	9.08	-0.876	Nuclear	
	AcWOX13a	Acc05283.1	266	29,050.87	5.49	-0.448	Nuclear	
	AcWOX11a	Acc08359.1	199	22,315.54	9.75	-0.808	Nuclear	
	AcWOX9a	Acc09522.1	280	32,003.07	5.87	-0.974	Nuclear	
	AcWOX4a	Acc11781.1	222	25,554.82	9.51	-0.909	Nuclear	
	AcWOX4b	Acc12050.1	261	28,424.23	5.39	-0.423	Nuclear	
	AcWOX11b	Acc16985.1	238	27,037.52	5.30	-1.021	Nuclear	
	AcWOX9b	Acc17296.1	235	26,266.99	9.47	-0.829	Nuclear	
	AcWOX1a	Acc18757.1	347	37,969.27	8.30	-0.461	Nuclear	
	AcWOX4c	Acc23762.1	236	27,155.85	5.70	-1.118	Nuclear	
	AcWOX13b	Acc24349.1	294	32,910.35	5.79	-0.980	Nuclear	
	AcWUS1b	Acc24453.1	281	32,134.20	5.79	-0.996	Nuclear	
	AcWOX2	Acc25877.1	252	27,361.96	5.55	-0.466	Nuclear	
	AcWOX3a	Acc25908.1	354	39,260.64	8.28	-0.606	Nuclear	
	AcWOX5	Acc27793.1	296	34,123.19	9.46	-0.922	Nuclear	
	AcWOX1b	Acc29332.1	215	24,485.44	9.05	-0.817	Nuclear	
	AcWOX3b	Acc30208.1	255	27,862.43	5.38	-0.567	Nuclear	
	<i>A. eriantha</i>	AeWOX13	DTZ79_05g01270	361	41,243.21	6.74	-0.871	Nuclear
		AeWOX11	DTZ79_08g00560	224	25,913.02	9.20	-0.970	Nuclear
AeWOX4a		DTZ79_10g10530	280	31,890.12	5.66	-0.907	Nuclear	
AeWOX4b		DTZ79_11g02060	285	31,718.21	6.32	-0.925	Nuclear	
AeWOX12		DTZ79_15g08240	248	27,951.01	9.76	-0.929	Nuclear	
AeWOX9		DTZ79_15g11700	210	24,383.34	8.58	-0.769	Nuclear	
AeWOX4c		DTZ79_21g04040	169	19,432.64	9.16	-0.785	Nuclear	
AeWOX10		DTZ79_21g11470	371	42,184.49	9.04	-0.875	Nuclear	
AeWUS1		DTZ79_21g12670	173	20,018.59	6.78	-0.611	Nuclear	
AeWOX2		DTZ79_23g05220	200	22,510.43	6.84	-0.615	Nuclear	

Note:

Protein composition and physiochemical characteristics of kiwifruit WOX proteins.

clade) (Fig. 2). Eleven of 17 *AcWOXs* and five of 10 *AeWOXs* were assigned in the modern/WUS clade, and the ancient clade contained the least number of both *AcWOX* and *AeWOX* genes (two *AcWOXs* and two *AeWOXs*) (Fig. 2). The intermediate clade had four *AcWOXs* and three *AeWOXs* (Fig. 2). *AcWOXs* and *AeWOXs* grouped with different WOX genes in Arabidopsis and rice indicated that both *AcWOXs* and *AeWOXs* probably had abundant diversified functions similar to WOX genes in Arabidopsis and rice (Fig. 2).

Chromosomal localization and structure analysis of kiwifruit WOXs

The 17 *AcWOX* genes were randomly distributed on 12 chromosomes of *Ac* (Fig. 3A), of which chromosome 8 and 21 included the most abundant WOX genes (three *AcWOX* genes), followed by three chromosomes (chr 5, 23, and 26) containing two genes and the

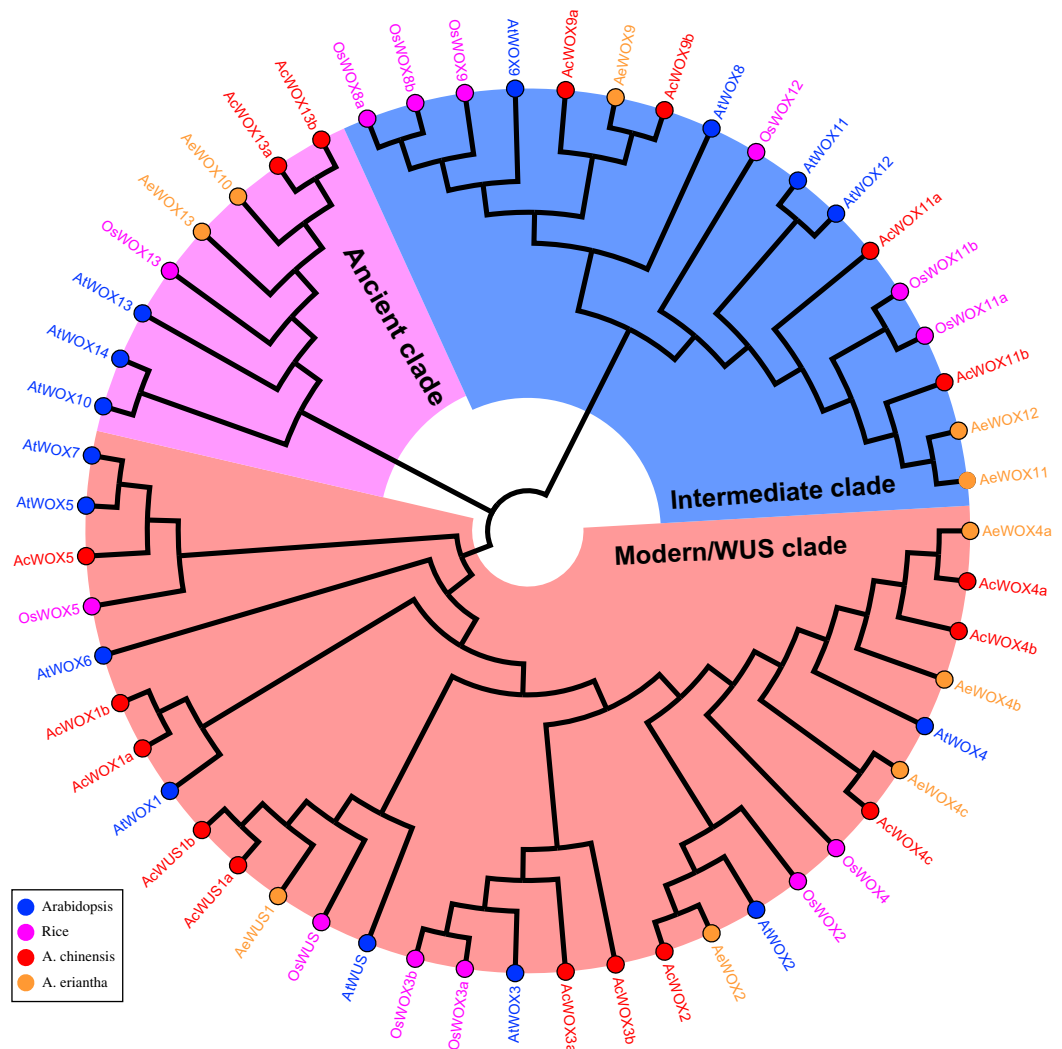


Figure 2 Phylogenetic tree of WOX. Phylogenetic tree of the WOX proteins. The full-length WOX protein sequences from rice (*Os*, pink gene name and circles), *Arabidopsis* (*At*, blue gene name and circles), *A. chinensis* (*Ac*, red gene name and circles) and *A. eriantha* (*Ae*, orange gene name and circles) were aligned using ClustalX 2.0 with default parameters. Then, the unrooted phylogenetic tree was constructed using MEGA X and the Neighbour-Joining method. The ancient clade, intermediate clade, and modern/WUS clade were highlighted using pink, blue, and light red sectors, respectively.

Full-size DOI: 10.7717/peerj.12348/fig-2

other seven chromosomes (chr 3, 10, 11, 15, 16, 24, and 27) containing one *AcWOX* gene (Fig. 3A and Table S1). Similarly, the 10 *AeWOX* genes were unevenly distributed on seven chromosomes. Chr 21 and 15 contained three and two *AeWOX* genes, separately, and each of the other five chromosomes (chr 5, 8, 10, 11, and 23) possessed one *AeWOX* gene (Fig. 3B and Table S1).

The exon-intron structure is a primary evolutionary feature of a gene family and provides a clue for function diversification and classification (Shiu & Blecker, 2003). The exon number of *AcWOXs* and *AeWOXs* varied from two to four (Fig. 4). In terms of intron number and exon length, both *AcWOXs* and *AeWOXs* in the ancient clade were

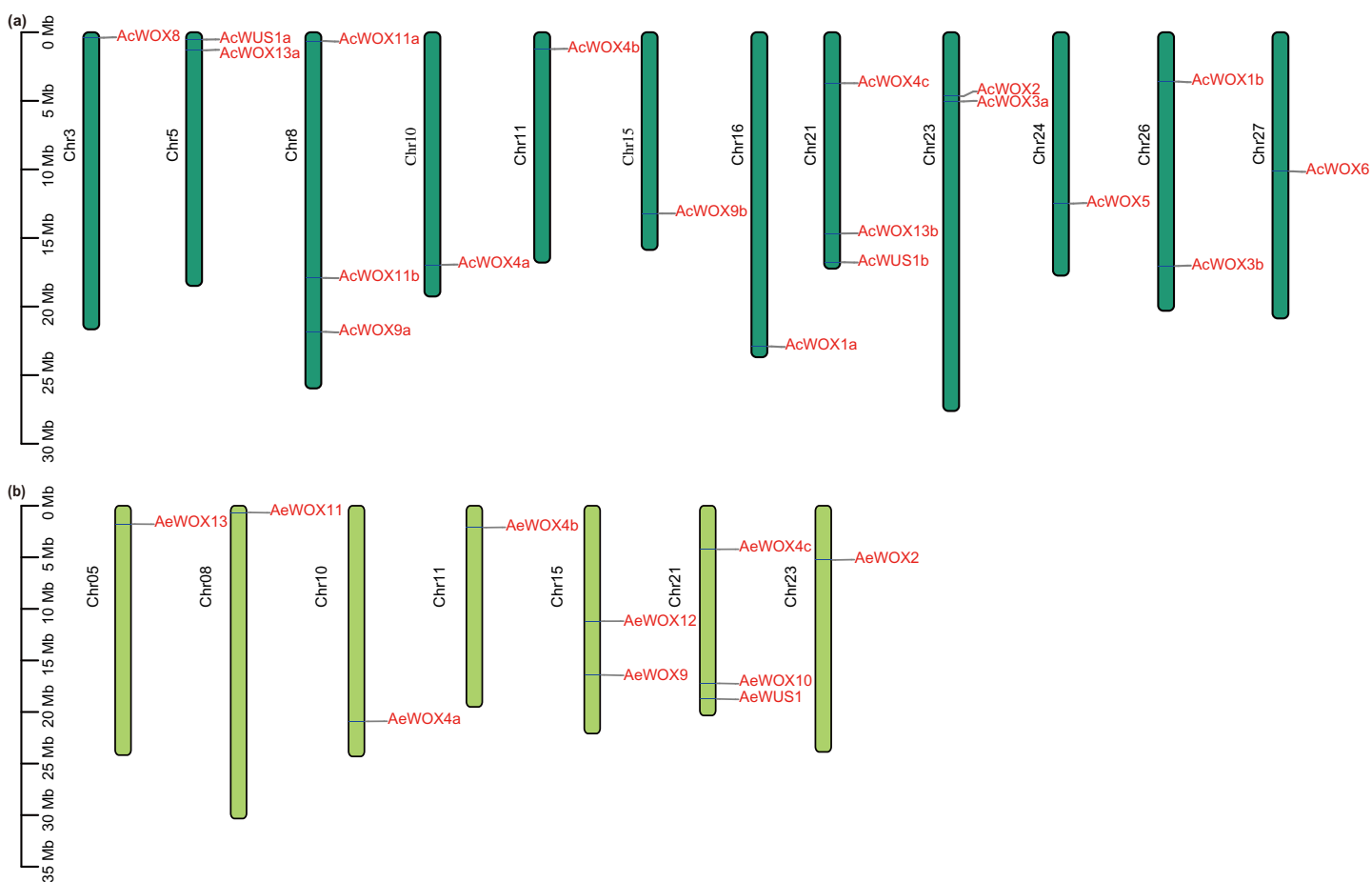


Figure 3 Chromosome location of WOX. Distribution of WOX genes in *Ac* (A) and *Ae* (B) genomes.

Full-size  DOI: 10.7717/peerj.12348/fig-3

conserved for exon-intron structures (Fig. 4). In the intermediate clade, exon numbers of *AeWOXs* varied from two to four. In contrast, the *AcWOXs* in this clade had a fixed exon number, indicating that *WOX* genes had undergone varied evolutionary patterns in the two kiwifruit species. In each species, *WOX* genes in the same clade were more similar than those among different clades. Moreover, the exon-intron structure of both *AcWOX* and *AeWOX* genes diverged more in the modern/WUS clade, and this may result in the functional diversification of *WOXs* in this clade in two kiwifruits (Fig. 4).

Domain architecture and conserved motifs analysis of kiwifruit *WOXs*

To infer the conserved motif architectures of kiwifruit *WOXs*, the motif compositions of entire sequences were predicted by MEME (Bailey *et al.*, 2009) (Fig. 5 and Fig. S1). In total, 10 conserved motifs were identified for the kiwifruit *WOXs* and designated as motif 1–10 (Fig. S1). The motif number of the *WOX* gene ranged from two to eight in each kiwifruit (Fig. 5). Within the modern/WUS clade, the motif number varied greatly from two to eight, while motif numbers in the intermediate clades (five or six) and ancient clades (four or six) were stable (Fig. 5). All *WOX* genes in the two kiwifruit species

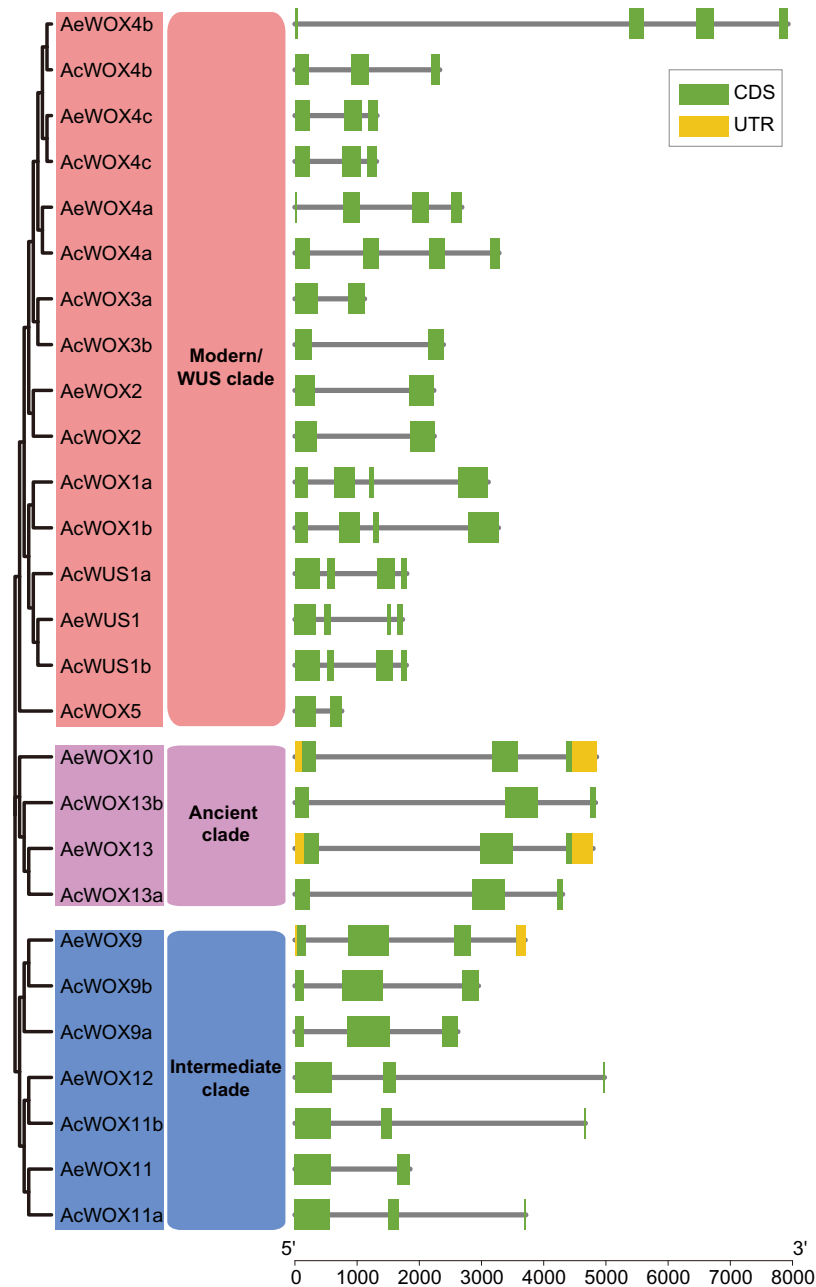


Figure 4 Structures of WOX genes. Exon-intron structures of WOX genes in two kiwifruit species. The left panel indicated the phylogenetic tree containing AcWOX and AeWOX proteins; the middle panel showed three clades; the right panel showed exon-intron structures of kiwifruit WOX genes. The green rectangle, the yellow rectangle, and the regular line represent exons, UTRs, and introns, respectively. [Full-size !\[\]\(fcc3264021d438d9732560e78099f674_img.jpg\) DOI: 10.7717/peerj.12348/fig-4](https://doi.org/10.7717/peerj.12348/fig-4)

contained motif 1, and we confirmed that motif 1 was the homeodomain with Pfam and SMART databases (Fig. 5). Furthermore, we found that motif 1 sequences in kiwifruit WOX genes were highly conserved (Fig. S2). Two and one clade-specific motifs were found in modern/WUS clade WOXs (motif 8 and 9) and ancient clade WOXs (motif 4),

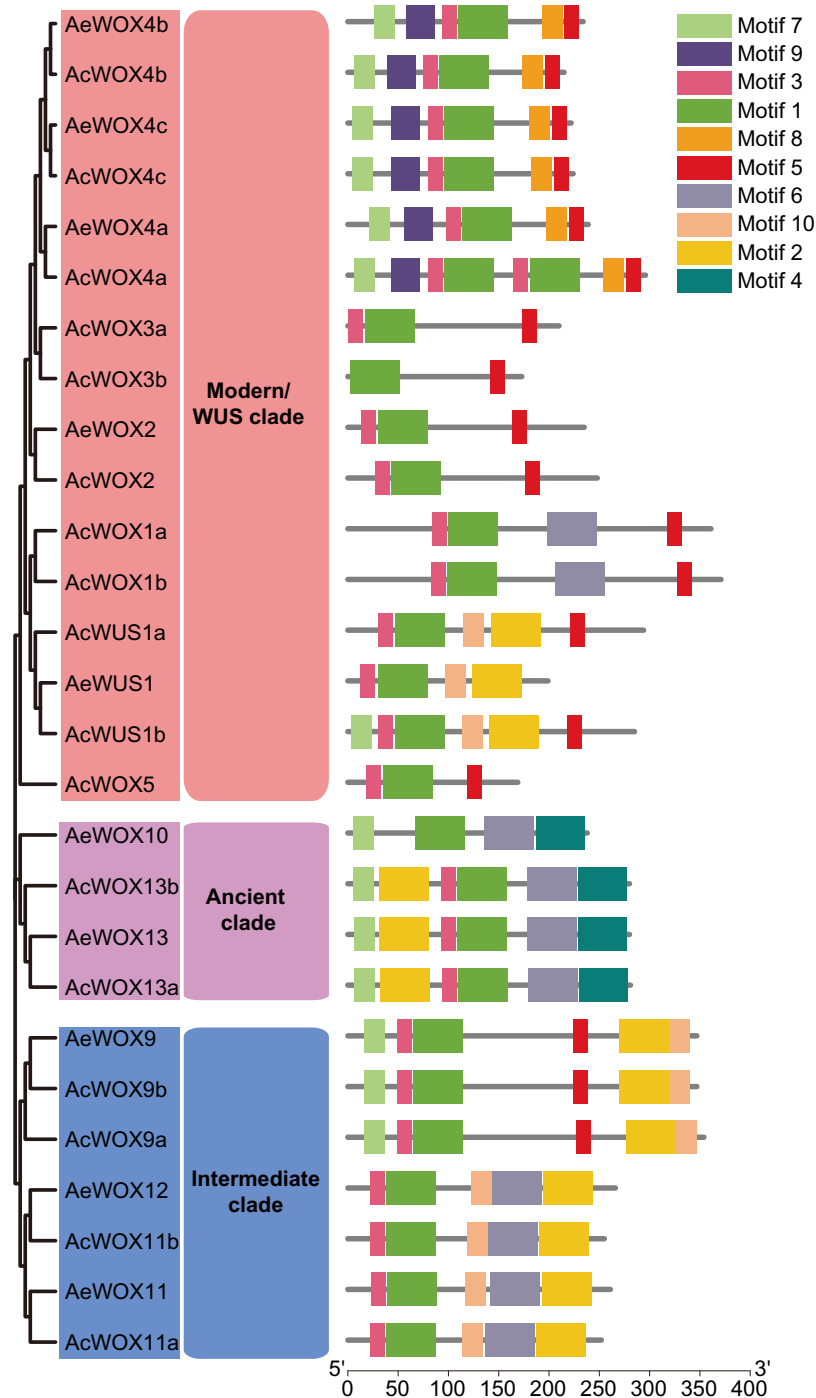


Figure 5 Motifs of WOX. Motif architectures of kiwifruit WOX proteins. The left panel indicated the phylogenetic tree of AcWOX and AeWOX protein sequences; the middle panel showed the defined clades; the right panel showed motif architectures of WOX proteins. Rectangles with different colors represented different motifs. [Full-size !\[\]\(1663bb69f307a960345edb0e712f8c02_img.jpg\) DOI: 10.7717/peerj.12348/fig-5](https://doi.org/10.7717/peerj.12348/fig-5)

respectively (Fig. 5). Similar to results of exon-intron structure, closely phylogenetically related WOX genes showed conserved motif structures, including motif number and organization, which indicated similar functions among them (Fig. 5).

Table 2 WOX duplication events.

Species	Duplicate pairs	Ka	Ks	Ka/Ks	Duplication
<i>A. chinensis</i>	AcWOX4a/AcWOX4b	0.06322	0.23011	0.27473	WGD
	AcWOX4a/AcWOX4c	0.18728	0.71925	0.26038	WGD
	AcWOX4b/AcWOX4c	0.16292	0.70114	0.23237	WGD
	AcWOX9b/AcWOX9a	0.06494	0.20962	0.30979	WGD
	AcWUS1b/AcWUS1a	0.02622	0.15924	0.16464	WGD
	AcWOX13b/AcWOX13a	0.03055	0.22185	0.13769	WGD
	AcWOX3a/AcWOX3b	0.15948	0.52930	0.30131	WGD
	AcWOX11a/AcWOX11b	0.04509	0.15773	0.28589	WGD
<i>A. eriantha</i>	AeWOX13/AeWOX10	0.02696	0.22560	0.11951	WGD
	AeWOX11/AeWOX12	0.05723	0.16531	0.34620	WGD
	AeWOX4a/AeWOX4b	0.12001	0.35079	0.34212	WGD
	AeWOX4a/AeWOX4c	0.18328	0.68682	0.26686	WGD
	AeWOX4b/AeWOX4c	0.20150	0.78790	0.25574	WGD

Note:

WOX duplication events identified in kiwifruits.

All duplicated gene pairs belonged to the modern/WUS and the intermediate clades, indicating these kiwifruit WOXs diverged considerably and had more potential to be new functionalized than that in the ancient clade (Fig. 6 and Table 2). All duplicated gene pairs were produced by the whole-genome duplication, indicating that the WGD accounted for the expansion of kiwifruit WOX families (Table 2).

To estimate the selection pressure that kiwifruit WOXs experienced after the gene duplication, we calculated the Ka/Ks ratios, ratios of the rate of nonsynonymous substitution (Ka) to the rate of synonymous substitution (Ks) (Table 2 and Table S2). Generally, the Ka/Ks value reflects the selection pressure during evolution (Ka/Ks = 1: neutral selection; Ka/Ks > 1: positive selection; Ka/Ks < 1: purifying selection) (Alvarez et al., 2018). In this study, Ka/Ks ratios of WOXs ranged from 0.096 to 0.436, with an average of 0.259 (Table 2 and Table S2). These results suggested that purifying selection was the primary evolutionary force acting on kiwifruit WOXs.

Cis-element analysis of promoter regions of kiwifruit WOXs

The *cis*-element plays a crucial control in transcriptional regulation and significantly affects gene function (Nakashima, Ito & Yamaguchi-Shinozaki, 2009). The 1,500-bp upstream region of each kiwifruit WOX gene was extracted and employed for the *cis*-element prediction. Totally, 17 functional *cis*-elements were retained, and the core promoter elements, such as TATA-box and CAAT-box, were presented in all promoters of kiwifruit WOXs. The 17 functional *cis*-elements were classified into four subfamilies, including light responsiveness, plant growth and development, phytohormone responsive, and stress-responsive subfamily (Fig. 7A). Elements of the light responsiveness subfamily were the most abundant presented in the promoter regions of kiwifruit WOX genes of the two species, indicating that light could significantly affect expression patterns of kiwifruit WOXs and gene function (Fig. 7B). The number of light responsiveness

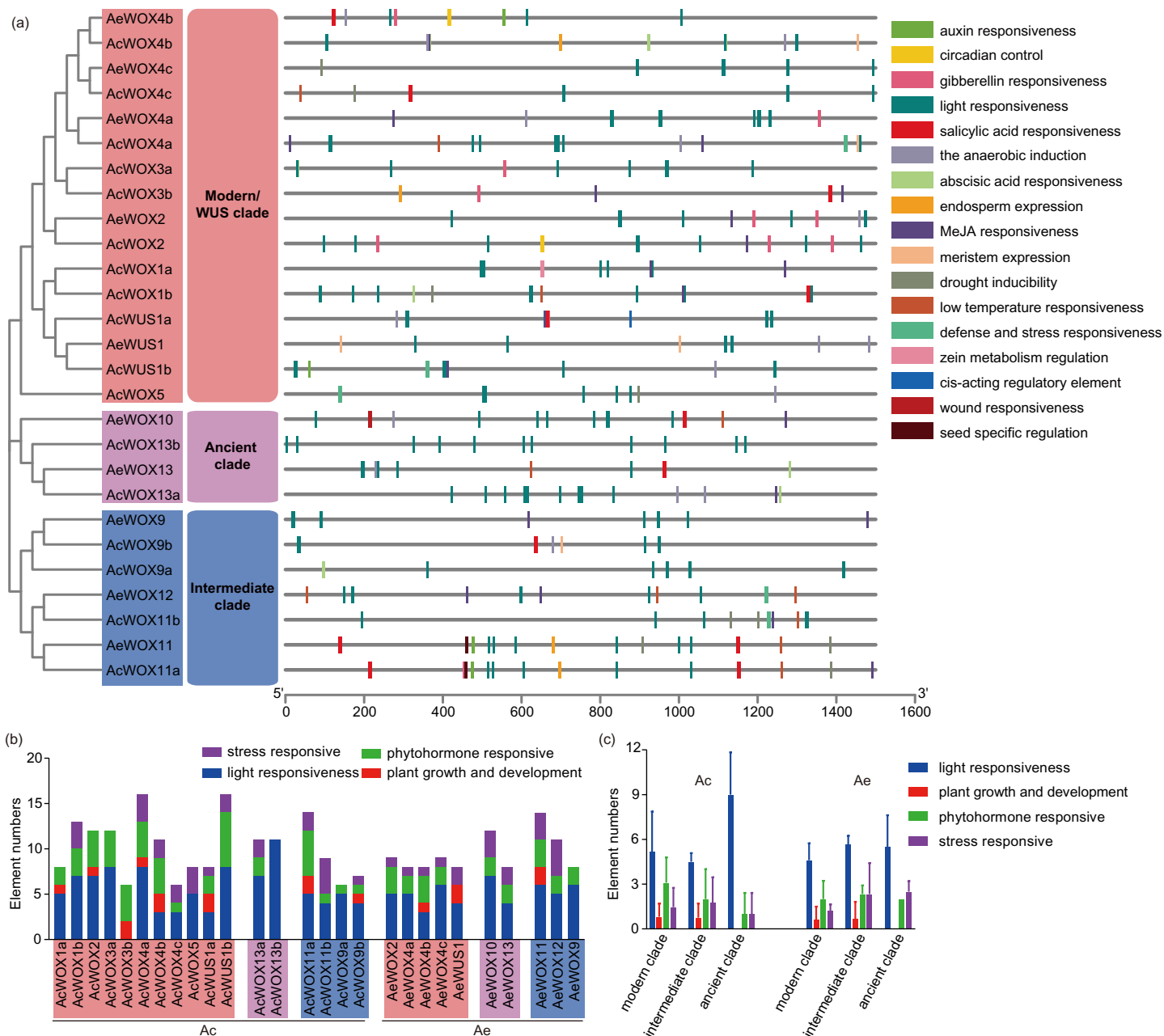


Figure 7 Cis-elements of WOX. Cis-elements analysis in the promoter regions of kiwifruit WOX genes. (A) The cis-element architectures in the 1,500-bp promoter regions of kiwifruit WOXs. Rectangle with different colors represented different cis-elements. (B) The number of cis-elements in the promoter region of each kiwifruit WOX gene. (C) The average number of cis-elements for each clade was showed.

Full-size [DOI: 10.7717/peerj.12348/fig-7](https://doi.org/10.7717/peerj.12348/fig-7)

cis-element in all kiwifruit WOXs ranged from 0 (*AcWOX3b*) to 11 (*AcWOX13b*) (Figs. 7A and 7B). The number of the light responsiveness cis-element within WOXs differed between two kiwifruit species (Fig. 7C). The cis-element organizations for the duplicated gene pairs were evolved divergently (Fig. 7A), suggesting the specific expression patterns and new functionalization for the duplicated gene pairs. However, the cis-element

arrangements of the orthologous *WOX* gene pairs for the two species were highly similar, indicating that the orthologous *WOX* gene pairs possibly had similar functions (Fig. 7A).

Expression patterns of kiwifruit *WOX*s

Firstly, we investigated the expression patterns of *AcWOX* genes in three tissues (leaf, root, and stem) based on transcriptome data (Fig. 8A). Our results showed that *AcWOX* genes had highly tissue-specific expression patterns (Fig. 8A). *AcWOX13a* and *AcWOX13b* highly expressed in all three tissues but more abundant in leaf and root, indicating that expression of *AcWOX13a/13b* might be essential for the leaf and root (Fig. S3). The other four *AcWOX*s, including *AcWOX4a/4b/11a/11b*, were expressed lowly in three tissues (Fig. S3). While the *AcWOX5* is expressed explicitly in the root (Fig. 8A and Fig. S3). We further analyzed the expression profiles of *AcWOX* genes during fruit development. Four *AcWOX* genes highly expressed in fruits, and they gradually increased (*AcWOX13a*) or decreased (*AcWOX4a/4b/13b*) their expressions along with fruit development (Fig. 8B). These indicated that these four *AcWOX*s might affect fruit development differently (Fig. S3B).

To further confirm whether the expression of *WOX* genes was influenced by hormonal treatments and biotic stresses, we analyzed transcriptomic data from *Ac* fruits which treated with ethylene (Gunaseelan *et al.*, 2019) or invaded with *Pseudomonas syringae* pv. *actinidiae* (Psa) which was the pathogen of kiwifruit bacterial canker disease (Michelotti *et al.*, 2018). Totally, five *AcWOX* genes significantly responded to ethylene treatments (Fig. 8C). Among them, four genes (*AcWOX3b/4b/5/13a*) were upregulated by ethylene treatment and gradually reduced their expressions after the treatment, and the *AcWOX13a* had the highest expression level (Fig. S3C). Besides, *AcWOX13b* was downregulated by the ethylene treatment (Fig. S3C).

We detected *AcWOX* gene expression profiles in response to Psa infection with three sets of transcriptomic comparisons, *i.e.*, (a) comparative transcriptomes of the resistance cultivar and the susceptible cultivar (Fig. 8D); (b) two susceptible cultivars (Fig. 8E); (c) with or without Acibenzolar-S-methyl (ASM) treatment (Fig. 8F). In the first comparison, we identified five highly expressed *AcWOX* genes with varied transcriptional levels among different infection times (Fig. 8D). *AcWOX13a* and *AcWOX13b* displayed abundant expression in both cultivars and showed higher expressions in the resistant variety (HT) than in the susceptible variety (HY) (Fig. 8D and Fig. S3D), indicating that *AcWOX13a* and *AcWOX13b* might affect kiwifruit resistance to Psa. Similar to the results in the first set, transcriptional levels of *AcWOX13a* and *AcWOX13b* were higher than others under the infection of Psa in the second set of comparison (Fig. 8E and Fig. S3E). The third set of the comparison showed that ASM inoculated kiwifruits increased their expression of *AcWOX13a/13b/4a/4b* compared with samples without the ASM treatment (Fig. 8F and Fig. S3F).

DISCUSSION

The *WOX* gene family is the core regulator for forming the shoot apical meristem and embryonic development, stem cell maintenance, and various other developmental

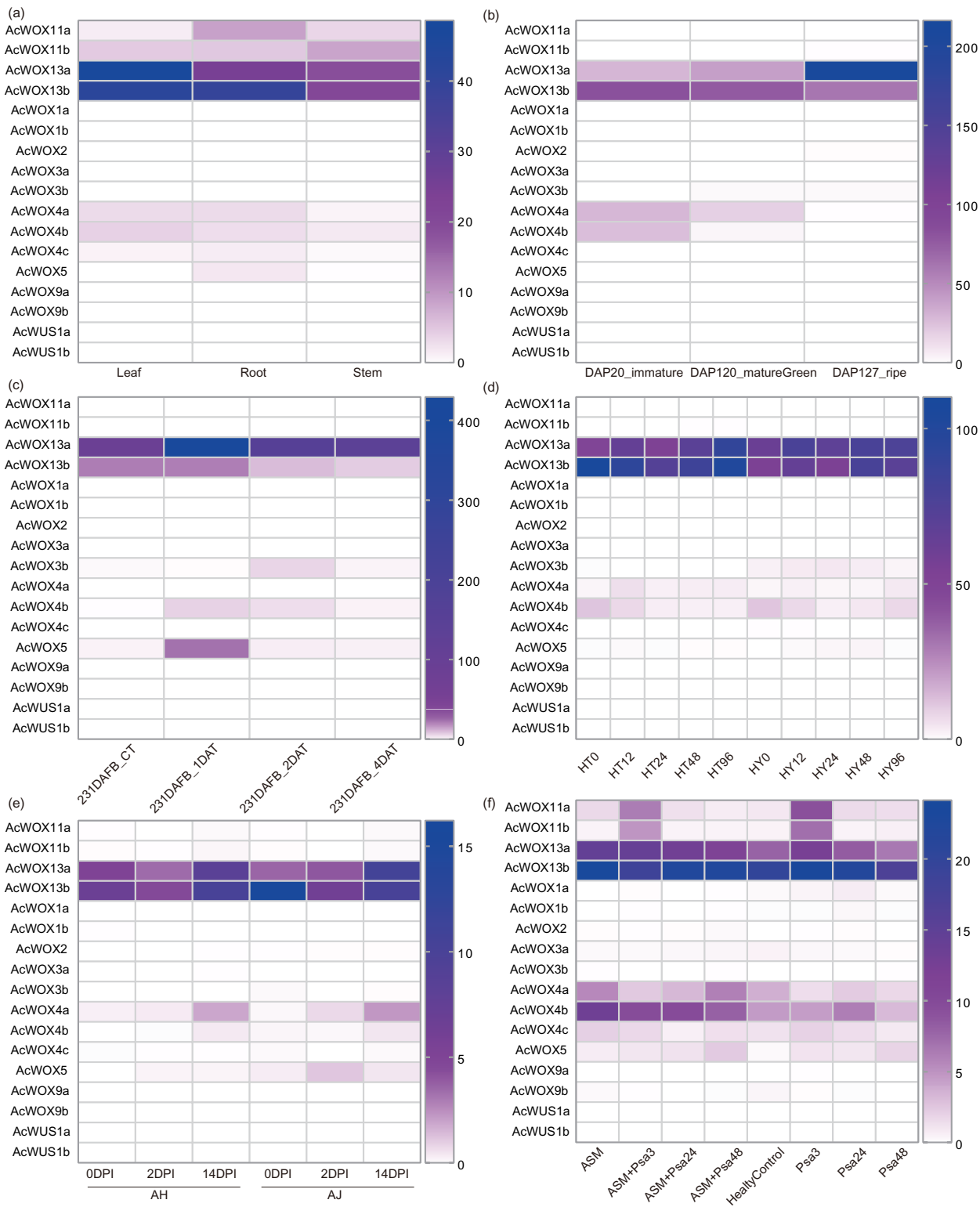


Figure 8 Expression patterns of WOX. Expression profiles of *AcWOX* genes in different tissues, fruit developmental stages, and under different treatments. The heatmap indicated the FPKM (fragments per kilobase of exon model per million mapped reads) values of *AcWOX* genes. (A) Expression profiles of *AcWOX*s in three tissues. (B) Expression profiles of *AcWOX*s in three fruit developmental stages. DAP, days after pollination. (C) Expression profiles of *AcWOX*s in samples treated with ethylene. DAFB, days after full bloom of fruit; DAT, day after treated with ethylene.

Figure 8 (continued)

(D) Expression profiles of *AcWOXs* in two kiwifruit cultivars infected with *Psa*. HT and HY represented resistant and susceptible cultivar, respectively. The number following the cultivar name showed hours post the *Psa* invasion. (E) Expression profiles of *AcWOXs* in two susceptible cultivars to the invasion of *Psa*. DPI, days post-infection. (F) Expression profiles of *AcWOXs* in samples with or without Acibenzolar-S-methyl (ASM) treatment during the *Psa* infection. Healtycontrol represented samples without any treatment or infection. The number presented in the sample names indicated hours post the *Psa* infection.

Full-size  DOI: 10.7717/peerj.12348/fig-8

processes in plants (Ariel *et al.*, 2007; Wu, Chory & Weigel, 2007; Deveaux *et al.*, 2008; Shimizu *et al.*, 2009; van der Graaff, Laux & Rensing, 2009; Palovaara *et al.*, 2010). Genome-wide identification of the *WOX* gene family had been accomplished in several plants (Deveaux *et al.*, 2008; Liu *et al.*, 2014b; Cheng *et al.*, 2014; Tang *et al.*, 2017; Rahman *et al.*, 2017; Li *et al.*, 2018, 2020; Ramkumar *et al.*, 2018; Shafique Khan *et al.*, 2021). However, genome-wide characterization of the *WOX* gene family had not been conducted in kiwifruits. In the present study, we *in silico* identified the genome-wide *WOX* gene family in two kiwifruit species (*Ac* and *Ae*). Further, we compared the characters and evolutionary patterns of kiwifruit *WOXs* of the two species. In addition, we analyzed and compared *cis*-element organizations for promoter regions of kiwifruit *WOXs* identified in the two species. We also investigated the expression profiles of *AcWOXs* in different tissues and different fruit developmental stages and the influence of hormonal treatment and biotic stresses on *AcWOXs* expression.

Seventeen and 10 *WOX* genes were identified in *Ac* and *Ae*, respectively (Fig. 1 and Table 1). Compared to the *WOX* family in *Arabidopsis*, the *Ac* has more while *Ae* has fewer family members. Interestingly, no *WOX* genes from *Ac* and *Ae* are classified together with *AtWOX6*, and no *WOX* genes from *Ae* are classified together with *AtWOX1/5/7*. This may be due to the gene loss in the evolution of *Actinidia* species. The lost of *WOX6* homologous gene has also been reported in many plants including Orchidaceae species (Kanchan & Sembi, 2020; Victorathisayam *et al.*, 2020), Solanaceae species (Li *et al.*, 2018), and cucumber (Han *et al.*, 2021). *AtWOX6* regulates ovule development and plays a role in freezing tolerance in *Arabidopsis* (Park *et al.*, 2005). However, *WUS* and *WOX6* genes possess some similar functions and could be replaced mutually sometimes (Dolzblasz *et al.*, 2016). *WOX1* and *WOX3* has been demonstrated redundantly control leaves development in *Petunia*, *Arabidopsis* and tomatos (Vandenbussche *et al.*, 2009; Nakata *et al.*, 2018; Wang *et al.*, 2021). *WOX6* and *WOX7* comprise close relatives of *WOX1* and *WOX5*, respectively, and are possibly due to the recent whole-genome duplication (Blanc & Wolfe, 2004). These suggest that *WOX* gene family members could be replaced, and it may make their losing in evolution possible. *WOX1* has been demonstrated that was possibly lost in monocots, where grass genomes manifested a *WOX3* duplication (Nardmann & Werr, 2013).

Duplicated *WOX* gene pairs in both *Ac* and *Ae* were entirely owing to WGD (Fig. 6 and Table 2). Genomic analyses verified that both *Ac* and *Ae* genomes experienced three ancient WGD events (Pilkington *et al.*, 2018; Tang *et al.*, 2019), which supported our results. However, the difference of *WOX* gene number between *Ac* and *Ae* indicated that the *WOX* gene family in *Ac* and *Ae* had undergone inconsistent evolutionary patterns (Pilkington *et al.*, 2018; Tang *et al.*, 2019). Together with the asymmetric gene losing in

these two kiwifruit species, *WOX* gene family members are species-specific in *Actinidia* genus. In addition, we inferred that translocation, gene retention, and gene loss post whole-genome duplications were the evolutionary forces causing variations of the *WOX* gene number and distribution in *Ac* and *Ae* genomes. Signals of purifying selection were found for all *WOX* genes in both species, which indicated the crucial roles of kiwifruit *WOX*s.

Homeodomain, a domain that contains a helix-loop-helix-turn-helix structure (*Katoh & Standley, 2013*), is conserved in the *WOX* gene family among different species and thus maintains the functional integrity of *WOX* genes. Except for the homeodomain, we additionally identified nine conserved motifs in kiwifruit *WOX*s (*Fig. 5*). Clade-specific or subclade-specific motifs in kiwifruit *WOX*s genes suggested the functional differentiation among *WOX*s in different clades (*Fig. 5*). However, gene structures and conserved motif organizations of most kiwifruit *WOX*s belonging to the same subclade were consistent. The *cis*-element analysis of promoter regions of kiwifruit *WOX*s indicated that the *cis*-element organizations of kiwifruit *WOX*s were extremely varied, even for those in the same subclade (*Fig. 7*). We inferred that the *cis*-element organizations of *WOX*s belonging to the same subclade regulated the functional divergence of those *WOX*s by regulating their expression patterns, which was verified by the results of expression analysis (*Fig. 8*). In total, gene structure, motif organization, and *cis*-element arrangement precisely controlled the functional divergent of kiwifruit *WOX*s.

Promoters are regions of DNA that initiate transcription of particular genes. They play prominent roles in the temporal and spatial regulation of gene expression. In the present study, a series of development-, hormone-, response- and stress- related *cis*-elements were detected in the promoter of kiwifruit *WOX*s (*Fig. 7*). Each *WOX* gene harbours at least six *cis*-elements belonging to at least two different functional subfamilies, except *AcWOX13b* which has 11 light responsiveness *cis*-elements (*Fig. 7*). Accumulating evidence has demonstrated that plant stress resistance is regulated by phytohormones (*Chaiprasongsuk et al., 2018; Ditengou et al., 2018*). We suspect that expression of *WOX* genes were influenced by stress, and it was uncovered by RNA-seq results in *Ac*. However, the relationship between the stress resistance and phytohormones needs more evidences.

Gene expression patterns in different tissues or under different treatments can be used to identify the functions of genes. Expression patterns of *WOX* genes are different either between *A. thaliana* and *Populus tomentosa* (*Liu et al., 2014b*) or between *A. thaliana* and rice (*Zhang et al., 2010*). In this study, expression patterns of *WOX* genes in kiwifruits were different from those plants informed above (*Fig. 8*). These implied that the functions of *WOX* genes might be different among monocots and dicotyledones of herbal plants, woody plants and liane.

In *AcWOX* and *AeWOX* members, few genes were mainly expressed in specific organs, indicating that they may be involved in different development processes. In *Ac* kiwifruit, *AcWOX13a* and *AcWOX13b* expressed higher than other *WOX*s, and they often respond to stresses dramatically (*Fig. 8*). This indicated the pivotal role of *WOX*s of the ancient clade in kiwifruit development and stress resistance. Similar functioned *WOX* gene

(*OsWOX11* and *OsWOX13*) has been reported in rice (*Tvorogova et al., 2021*). *OsWOX11*, a member of the intermediate clade, was the most reported, responding to abiotic stresses such as drought and cold reviewed in (*Tvorogova et al., 2021*). Minh-Thu reported that *OsWOX13*, an ancient clade *WOX* gene, enhances drought tolerance and triggers early flowering in rice (*Shafique Khan et al., 2021*). In poplar, over-expression of *PtoWOX13* led to an increased adventitious root (AR) number, decreased AR length or increased AR roughness (*Liu et al., 2014b*). In walnut, *JrWOX13* plays an important role in later root development (*Chang et al., 2020*). It is unclear whether *AcWOX13a* and *AcWOX13b* regulate the stress resistance *via* root development. Further study of the precise function of *AcWOX13a* and *AcWOX13b* will be needed in the future.

In summary, the present study firstly detected *WOX* genes from kiwifruit genomes. Furthermore, we identified the potential *WOXs* in response to hormonal treatments and biotic stresses. Our research will provide a foundation for accelerating the genetic breeding of kiwifruits.

CONCLUSIONS

In conclusion, we performed genome-wide identification and characterization of the *WOX* gene family in *Actinidia chinensis* (Ac) and *A. eriantha* (Ae) and conducted a detailed investigation of their evolutionary relationship, genome organization, duplication events and expression profiles. In total, 17 and 10 *WOX* genes have been identified from Ac and Ae genomes. They were classified into three clades (the ancient clade, the intermediate clade, and the morden/WUS clade) based on the sequence alignment and phylogenetic analysis, which was corresponding to previous report of Arabidopsis. Gene structures and motif patterns showed that *WOX* members in the same clade displayed more similarly. Gene duplications and selective pressure analysis indicated that *WOX* genes in two kiwifruit species have undergone different evolution patterns after the shared genome duplication events. Subcellular localization revealed that all *WOX* genes were located inside the nucleus. Furthermore, expression patterns detected tissue-specific expressed genes and hormonal or abiotic-stress responding genes. Overall, *WOX* genes identified in Ac and Ae genomes provided insight into general characters, evolutionary patterns, and functional diversity of kiwifruit *WOXs*.

ADDITIONAL INFORMATION AND DECLARATIONS

Funding

This work was supported by the National Natural Science Foundation of China (31900278). The funders had no role in study design, data collection and analysis, decision to publish, or preparation of the manuscript.

Grant Disclosures

The following grant information was disclosed by the authors:
National Natural Science Foundation of China: 31900278.

Competing Interests

The authors declare that they have no competing interests.

Author Contributions

- Chen Feng conceived and designed the experiments, performed the experiments, analyzed the data, prepared figures and/or tables, and approved the final draft.
- Shuaiyu Zou performed the experiments, analyzed the data, prepared figures and/or tables, and approved the final draft.
- Puxin Gao performed the experiments, authored or reviewed drafts of the paper, and approved the final draft.
- Zupeng Wang conceived and designed the experiments, analyzed the data, authored or reviewed drafts of the paper, and approved the final draft.

Data Availability

The following information was supplied regarding data availability:

Feng, Chen (2021): RNA-Seq analysis. figshare. <https://doi.org/10.6084/m9.figshare.15134973.v1>.

Supplemental Information

Supplemental information for this article can be found online at <http://dx.doi.org/10.7717/peerj.12348#supplemental-information>.

REFERENCES

- Alvarez JM, Bueno N, Cañas RA, Avila C, Cánovas FM, Ordás RJ. 2018.** Analysis of the WUSCHEL-RELATED HOMEBOX gene family in *Pinus pinaster*: new insights into the gene family evolution. *Plant Physiology and Biochemistry* **123**:304–318 DOI [10.1016/j.plaphy.2017.12.031](https://doi.org/10.1016/j.plaphy.2017.12.031).
- Ariel FD, Manavella PA, Dezar CA, Chan RL. 2007.** The true story of the HD-Zip family. *Trends in Plant Science* **12(9)**:419–426 DOI [10.1016/j.tplants.2007.08.003](https://doi.org/10.1016/j.tplants.2007.08.003).
- Bailey TL, Boden M, Buske FA, Frith M, Grant CE, Clementi L, Ren J, Li WW, Noble WS. 2009.** MEME Suite: Tools for motif discovery and searching. *Nucleic Acids Research* **37(Web Server)**:202–208 DOI [10.1093/nar/gkp335](https://doi.org/10.1093/nar/gkp335).
- Blanc G, Wolfe KH. 2004.** Functional divergence of duplicated genes formed by polyploidy during *Arabidopsis* evolution. *Plant Cell* **16(7)**:1679–1691 DOI [10.1105/tpc.021410](https://doi.org/10.1105/tpc.021410).
- Chaiprasongsuk M, Zhang C, Qian P, Chen X, Li G, Trigiano RN, Guo H, Chen F. 2018.** Biochemical characterization in Norway spruce (*Picea abies*) of SABATH methyltransferases that methylate phytohormones. *Phytochemistry* **149**:146–154 DOI [10.1016/j.phytochem.2018.02.010](https://doi.org/10.1016/j.phytochem.2018.02.010).
- Chang Y, Song X, Zhang Q, Liu H, Bai Y, Lei X, Pei D. 2020.** Genome-wide identification of WOX gene family and expression analysis during Rejuvenational Rhizogenesis in Walnut (*Juglans regia* L.). *Forests* **11(1)**:16 DOI [10.3390/f11010016](https://doi.org/10.3390/f11010016).
- Chen C, Chen H, Zhang Y, Thomas HR, Frank MH, He Y, Xia R. 2020.** TBtools: an integrative toolkit developed for interactive analyses of big biological data. *Molecular Plant* **13(8)**:1194–1202 DOI [10.1016/j.molp.2020.06.009](https://doi.org/10.1016/j.molp.2020.06.009).

- Cheng CH, Seal AG, Boldingh HL, Marsh KB, MacRae EA, Murphy SJ, Ferguson AR. 2004. Inheritance of taste characters and fruit size and number in a diploid *Actinidia chinensis* (kiwifruit) population. *Euphytica* 138(2):185–195 DOI 10.1023/B:EUPH.0000046802.28347.41.
- Cheng S, Huang Y, Zhu N, Zhao Y. 2014. The rice WUSCHEL-related homeobox genes are involved in reproductive organ development, hormone signaling and abiotic stress response. *Gene* 549(2):266–274 DOI 10.1016/j.gene.2014.08.003.
- Costanzo E, Trehin C, Vandenbussche M. 2014. The role of WOX genes in flower development. *Annals of Botany* 114(7):1545–1553 DOI 10.1093/aob/mcu123.
- Denis E, Kbir N, Mary V, Claisse G, Conde e Silva N, Kreis M, Deveaux Y. 2017. WOX14 promotes bioactive gibberellin synthesis and vascular cell differentiation in Arabidopsis. *Plant Journal* 90(3):560–572 DOI 10.1111/tpj.13513.
- Deveaux Y, Toffano-Nioche C, Claisse G, Thareau V, Morin H, Laufs P, Moreau H, Kreis M, Lecharny A. 2008. Genes of the most conserved WOX clade in plants affect root and flower development in Arabidopsis. *BMC Evolutionary Biology* 8(1):291 DOI 10.1186/1471-2148-8-291.
- Ditengou FA, Gomes D, Nziengui H, Kochersperger P, Lasok H, Medeiros V, Paponov IA, Nagy SK, Nádai TV, Mészáros T, Barnabás B, Ditengou BI, Rapp K, Qi L, Li X, Becker C, Li C, Dóczy R, Palme K. 2018. Characterization of auxin transporter PIN6 plasma membrane targeting reveals a function for PIN6 in plant bolting. *New Phytologist* 217(4):1610–1624 DOI 10.1111/nph.14923.
- Dolzblasz A, Nardmann J, Clerici E, Causier B, Graaff E, Chen J, Davies B, Werr W, Laux T. 2016. Stem cell regulation by Arabidopsis WOX genes. *Molecular Plant* 9(7):1028–1039 DOI 10.1016/j.molp.2016.04.007.
- Gunaseelan K, McAtee PA, Nardoza S, Pidakala P, Wang R, David K, Burdon J, Schaffer RJ. 2019. Copy number variants in kiwifruit ETHYLENE RESPONSE FACTOR/APETALA2 (ERF/AP2)-like genes show divergence in fruit ripening associated cold and ethylene responses in C-REPEAT/DRE BINDING FACTOR-like genes. *PLOS ONE* 14(5):e0216120 DOI 10.1371/journal.pone.0216120.
- Han N, Tang R, Chen X, Xu Z, Ren Z, Wang L. 2021. Genome-wide identification and characterization of WOX genes in *Cucumis sativus*. *Genome* 64(8):761–776 DOI 10.1139/gen-2020-0029.
- Holland PWH. 2013. Evolution of homeobox genes. *Wiley Interdisciplinary Reviews: Developmental Biology* 2(1):31–45 DOI 10.1002/wdev.78.
- Jha P, Ochatt SJ, Kumar V. 2020. WUSCHEL: a master regulator in plant growth signaling. *Plant Cell Reports* 39(4):431–444 DOI 10.1007/s00299-020-02511-5.
- Katoh K, Standley DM. 2013. Fast track MAFFT multiple sequence alignment software version 7: improvements in performance and usability. *Molecular Biology and Evolution* 30(4):772–780 DOI 10.1093/molbev/mst010.
- Kim D, Paggi JM, Park C, Bennett C, Salzberg SL. 2019. Graph-based genome alignment and genotyping with HISAT2 and HISAT-genotype. *Nature Biotechnology* 37(8):907–915 DOI 10.1038/s41587-019-0201-4.
- Kumar S, Stecher G, Li M, Knyaz C, Tamura K. 2018. MEGA X: molecular evolutionary genetics analysis across computing platforms. *Molecular Biology and Evolution* 35(6):1547–1549 DOI 10.1093/molbev/msy096.
- Larkin MA, Blackshields G, Brown NP, Chenna R, Mcgettigan PA, McWilliam H, Valentin F, Wallace IM, Wilm A, Lopez R, Thompson JD, Gibson TJ, Higgins DG. 2007. Clustal W and Clustal X version 2.0. *Bioinformatics* 23(21):2947–2948 DOI 10.1093/bioinformatics/btm404.

- Lescot M, Déhais P, Thijs G, Marchal K, Moreau Y, Van De Peer Y, Rouzé P, Rombauts S. 2002. PlantCARE, a database of plant cis-acting regulatory elements and a portal to tools for in silico analysis of promoter sequences. *Nucleic Acids Research* 30(1):325–327 DOI 10.1093/nar/30.1.325.
- Li X, Hamyat M, Liu C, Ahmad S, Gao X, Guo C, Wang Y, Guo Y. 2018. Identification and characterization of the WOX family genes in five solanaceae species reveal their conserved roles in peptide signaling. *Genes* 9(5):260 DOI 10.3390/genes9050260.
- Li Z, Liu D, Xia Y, Li Z, Jing D, Du J, Niu N, Ma S, Wang J, Song Y, Yang Z, Zhang G. 2020. Identification of the WUSCHEL-Related Homeobox (WOX) gene family, and interaction and functional analysis of TaWOX9 and TaWUS in wheat. *International Journal of Molecular Sciences* 21(5):1581 DOI 10.3390/ijms21051581.
- Lie C, Kelsom C, Wu X. 2012. WOX2 and STIMPY-LIKE/WOX8 promote cotyledon boundary formation in Arabidopsis. *Plant Journal* 72(4):674–682 DOI 10.1111/j.1365-313X.2012.05113.x.
- Lin H, Niu L, McHale NA, Ohme-Takagi M, Mysore KS, Tadege M. 2013. Evolutionarily conserved repressive activity of WOX proteins mediates leaf blade outgrowth and floral organ development in plants. *Proceedings of the National Academy of Sciences of the United States of America* 110(1):366–371 DOI 10.1073/pnas.1215376110.
- Liu J, Sheng L, Xu Y, Li J, Yang Z, Huang H, Xu L. 2014a. WOX11 and 12 are involved in the first-step cell fate transition during de novo root organogenesis in Arabidopsis. *Plant Cell* 26(3):1081–1093 DOI 10.1105/tpc.114.122887.
- Liu B, Wang L, Zhang J, Li J, Zheng H, Chen J, Lu M. 2014b. WUSCHEL-related Homeobox genes in *Populus tomentosa*: diversified expression patterns and a functional similarity in adventitious root formation. *BMC Genomics* 15(1):1–14 DOI 10.1186/1471-2164-15-296.
- Kanchan M, Sembi J. 2020. Comparative transcriptomic analyses of four Phalaenopsis species to identify and characterize the WUSCHEL-related homeobox (WOX) gene family. *BioTechnologia* 101(4):309–322 DOI 10.5114/bta.2020.100423.
- Meng Y, Liu H, Wang H, Liu Y, Zhu B, Wang Z, Hou Y, Zhang P, Wen J, Yang H, Mysore KS, Chen J, Tadege M, Niu L, Lin H. 2019. HEADLESS, a WUSCHEL homolog, uncovers novel aspects of shoot meristem regulation and leaf blade development in *Medicago truncatula*. *Journal of Experimental Botany* 70(1):149–163 DOI 10.1093/jxb/ery346.
- Michelotti V, Lamontanara A, Buriani G, Orru L, Cellini A, Donati I, Vanneste JL, Cattivelli L, Tacconi G, Spinelli F. 2018. Comparative transcriptome analysis of the interaction between *Actinidia chinensis* var. *chinensis* and *Pseudomonas syringae* pv. *actinidiae* in absence and presence of acibenzolar-S-methyl. *BMC Genomics* 19(1):585 DOI 10.1186/s12864-018-4967-4.
- Mukherjee K, Brocchieri L, Bürglin TR. 2009. A comprehensive classification and evolutionary analysis of plant homeobox genes. *Molecular Biology and Evolution* 26(12):2775–2794 DOI 10.1093/molbev/msp201.
- Nakashima K, Ito Y, Yamaguchi-Shinozaki K. 2009. Transcriptional regulatory networks in response to abiotic stresses in Arabidopsis and grasses. *Plant Physiology* 149(1):88–95 DOI 10.1104/pp.108.129791.
- Nakata MT, Tameshige T, Takahara M, Mitsuda N, Okada K. 2018. The functional balance between the WUSCHEL-RELATED HOMEBOX1 gene and the phytohormone auxin is a key factor for cell proliferation in Arabidopsis seedlings. *Plant Biotechnology* 35:141–154.
- Nardmann J, Werr W. 2012. The invention of WUS-like stem cell-promoting functions in plants predates leptosporangiate ferns. *Plant Molecular Biology* 78(1–2):123–134 DOI 10.1007/s11103-011-9851-4.

- Nardmann J, Werr W. 2013. Symplesiomorphies in the WUSCHEL clade suggest that the last common ancestor of seed plants contained at least four independent stem cell niches. *New Phytologist* **199**(4):1081–1092 DOI [10.1111/nph.12343](https://doi.org/10.1111/nph.12343).
- Palovaara J, Hallberg H, Stasolla C, Hakman I. 2010. Comparative expression pattern analysis of WUSCHEL-related homeobox 2 (WOX2) and WOX8/9 in developing seeds and somatic embryos of the gymnosperm *Picea abies*. *New Phytologist* **188**(1):122–135 DOI [10.1111/j.1469-8137.2010.03336.x](https://doi.org/10.1111/j.1469-8137.2010.03336.x).
- Park SO, Zheng Z, Oppenheimer DG, Hauser BA. 2005. The PRETTY FEW SEEDS2 gene encodes an *Arabidopsis* homeodomain protein that regulates ovule development. *Development* **132**(3):841–849 DOI [10.1093/jxb/erq349](https://doi.org/10.1093/jxb/erq349).
- Pertea M, Pertea GM, Antonescu CM, Chang TC, Mendell JT, Salzberg SL. 2015. StringTie enables improved reconstruction of a transcriptome from RNA-seq reads. *Nature Biotechnology* **33**(3):290–295 DOI [10.1038/nbt.3122](https://doi.org/10.1038/nbt.3122).
- Pilkington SM, Crowhurst R, Hilario E, Nardoza S, Fraser L, Peng Y, Gunaseelan K, Simpson R, Tahir J, Deroles SC, Templeton K, Luo Z, Davy M, Cheng C, McNeilage M, Scaglione D, Liu Y, Zhang Q, Datson P, De Silva N, Gardiner SE, Bassett H, Chagné D, McCallum J, Dzierzon H, Deng C, Wang Y-Y, Barron L, Manako K, Bowen J, Foster TM, Erridge ZA, Tiffin H, Waite CN, Davies KM, Grierson EP, Laing WA, Kirk R, Chen X, Wood M, Montefiori M, Brummell DA, Schwinn KE, Catanach A, Fullerton C, Li D, Meiyalaghan S, Nieuwenhuizen N, Read N, Prakash R, Hunter D, Zhang H, McKenzie M, Knäbel M, Harris A, Allan AC, Gleave A, Chen A, Janssen BJ, Plunkett B, Ampomah-Dwamena C, Voogd C, Leif D, Lafferty D, Souleyre EJJ, Varkonyi-Gasic E, Gambi F, Hanley J, Yao J-L, Cheung J, David KM, Warren B, Marsh K, Snowden KC, Lin-Wang K, Brian L, Martinez-Sanchez M, Wang M, Ileperuma N, Macnee N, Campin R, McAtee P, Drummond RSM, Espley RV, Ireland HS, Wu R, Atkinson RG, Karunairatnam S, Bulley S, Chunkath S, Hanley Z, Storey R, Thrimawithana AH, Thomson S, David C, Testolin R, Huang H, Hellens RP, Schaffer RJ. 2018. A manually annotated *Actinidia chinensis* var. *chinensis* (kiwifruit) genome highlights the challenges associated with draft genomes and gene prediction in plants. *BMC Genomics* **19**:1–19 DOI [10.1186/s12864-018-4656-3](https://doi.org/10.1186/s12864-018-4656-3).
- Rahman Zur, Azam SM, Liu Y, Yan C, Ali H, Zhao L, Chen P, Yi L, Priyadarshani SVGN, Yuan Q. 2017. Expression profiles of Wuschel-related homeobox gene family in Pineapple (*Ananas comosus* L). *Tropical Plant Biology* **10**(4):204–215 DOI [10.1007/s12042-017-9192-9](https://doi.org/10.1007/s12042-017-9192-9).
- Ramkumar TR, Kanchan M, Upadhyay SK, Sembi JK. 2018. Identification and characterization of WUSCHEL-related homeobox (WOX) gene family in economically important orchid species *Phalaenopsis equestris* and *Dendrobium catenatum*. *Plant Gene* **14**:37–45 DOI [10.1016/j.plgene.2018.04.004](https://doi.org/10.1016/j.plgene.2018.04.004).
- Romera-Branchat M, Ripoll JJ, Yanofsky MF, Pelaz S. 2013. The WOX13 homeobox gene promotes replum formation in the *Arabidopsis thaliana* fruit. *The Plant Journal* **73**(1):37–49 DOI [10.1111/tpj.12010](https://doi.org/10.1111/tpj.12010).
- Shafique Khan F, Zeng RF, Gan ZM, Zhang JZ, Hu CG. 2021. Genome-wide identification and expression profiling of the WOX gene family in *Citrus sinensis* and functional analysis of a CsWUS member. *International Journal of Molecular Sciences* **22**(9):86–113 DOI [10.3390/ijms22094919](https://doi.org/10.3390/ijms22094919).
- Shimizu R, Ji J, Kelsey E, Ohtsu K, Schnable PS, Scanlon MJ. 2009. Tissue specificity and evolution of meristematic WOX3 function. *Plant Physiology* **149**(2):841–850 DOI [10.1104/pp.108.130765](https://doi.org/10.1104/pp.108.130765).

- Shiu SH, Bleecker AB. 2003.** Expansion of the receptor-like kinase/Pelle gene family and receptor-like proteins in Arabidopsis. *Plant Physiology* **132**(2):530–543 DOI [10.1104/pp.103.021964](https://doi.org/10.1104/pp.103.021964).
- Stonehouse W, Gammon CS, Beck KL, Conlon CA, von Hurst PR, Kruger R. 2013.** Kiwifruit: our daily prescription for health. *Canadian Journal of Physiology and Pharmacology* **91**(6):442–447 DOI [10.1139/cjpp-2012-0303](https://doi.org/10.1139/cjpp-2012-0303).
- Tang F, Chen N, Zhao M, Wang Y, He R, Peng X, Shen S. 2017.** Identification and functional divergence analysis of WOX gene family in paper mulberry. *International Journal of Molecular Sciences* **18**(8):1782 DOI [10.3390/ijms18081782](https://doi.org/10.3390/ijms18081782).
- Tang W, Sun X, Yue J, Tang X, Jiao C, Yang Y, Niu X, Miao M, Zhang D, Huang S, Shi W, Li M, Fang C, Fei Z, Liu Y. 2019.** Chromosome-scale genome assembly of kiwifruit *Actinidia chinensis* with single-molecule sequencing and chromatin interaction mapping. *GigaScience* **8**(4):1–10 DOI [10.1093/gigascience/giz027](https://doi.org/10.1093/gigascience/giz027).
- Tang C, Zhu X, Qiao X, Gao H, Li Q, Wang P, Wu J, Zhang S. 2020.** Characterization of the pectin methyl-esterase gene family and its function in controlling pollen tube growth in pear (*Pyrus bretschneideri*). *Genomics* **112**(3):2467–2477 DOI [10.1016/j.ygeno.2020.01.021](https://doi.org/10.1016/j.ygeno.2020.01.021).
- Tvorogova VE, Krasnoperova EY, Potsenkovskaia EA, Kudriashov AA, Dodueva IE, Lutova LA. 2021.** What does the WOX say? Review of regulators, targets, partners. *Molecular Biology* **131**:657 DOI [10.1134/S002689332102031X](https://doi.org/10.1134/S002689332102031X).
- van der Graaff E, Laux T, Rensing SA. 2009.** The WUS homeobox-containing (WOX) protein family. *Genome Biology* **10**:248 DOI [10.1186/gb-2009-10-12-24](https://doi.org/10.1186/gb-2009-10-12-24).
- Vandenbussche M, Horstman A, Zethof J, Koes R, Rijpkema AS, Gerats T. 2009.** Differential recruitment of WOX transcription factors for lateral development and organ fusion in *Petunia* and *Arabidopsis*. *The Plant Cell* **21**(8):2269–2283 DOI [10.1105/tpc.109.065862](https://doi.org/10.1105/tpc.109.065862).
- Victorathisayam T, Kanchan M, Himani, Suriyanarayanan TR, Sembhi JK, Ramkumar TR. 2020.** In silico identification, characterization and expression profile of WUSCHEL-related homeobox (WOX) gene family in *Vanilla planifolia*. *Plant Science Today* **7**:206–213 DOI [10.14719/pst.2020.7.2.722](https://doi.org/10.14719/pst.2020.7.2.722).
- Wang C, Zhao B, He L, Zhou S, Liu Y, Zhao W, Guo S, Wang R, Bai Q, Li Y, Wang D, Wu Q, Yang Y, Liu Y, Tadege M, Chen J, Melzer R. 2021.** The WOX family transcriptional regulator SILAM1 controls compound leaf and floral organ development in *Solanum lycopersicum*. *Journal of Experimental Botany* **72**:1822–1835 DOI [10.1093/jxb/eraa574](https://doi.org/10.1093/jxb/eraa574).
- Wang Y, Tang H, Debarry JD, Tan X, Li J, Wang X, Lee TH, Jin H, Marler B, Guo H, Kissinger JC, Paterson AH. 2012.** MScanX: a toolkit for detection and evolutionary analysis of gene synteny and collinearity. *Nucleic Acids Research* **40**(7):1–14 DOI [10.1093/nar/gkr1293](https://doi.org/10.1093/nar/gkr1293).
- Wu X, Chory J, Weigel D. 2007.** Combinations of WOX activities regulate tissue proliferation during Arabidopsis embryonic development. *Developmental Biology* **309**(2):306–316 DOI [10.1016/j.ydbio.2007.07.019](https://doi.org/10.1016/j.ydbio.2007.07.019).
- Wu CC, Li FW, Kramer EM. 2019.** Large-scale phylogenomic analysis suggests three ancient superclades of the WUSCHELRELATED HOMEBOX transcription factor family in plants. *PLOS ONE* **14**(10):e0223521 DOI [10.1371/journal.pone.0223521](https://doi.org/10.1371/journal.pone.0223521).
- Zhang X, Zong J, Liu J, Yin J, Zhang D. 2010.** Genome-wide analysis of WOX gene family in rice, sorghum, maize Arabidopsis and Poplar. *Journal of Integrative Plant Biology* **52**:1016–1026.